

Спецификация

Наименование	Осветительный модуль
Тип	AC LED Модуль
Модель	AMOAC-25-DX



C U S T O M E R		
Approved by	Approved by	Approved by
/	/	/
S U P P L I E R		
Drawn by	Checked by	Approved by
/	/	/

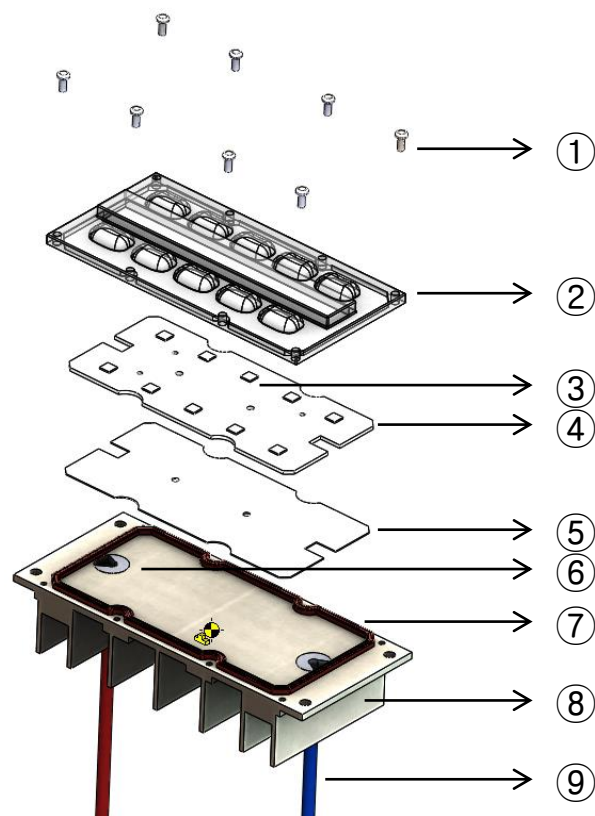
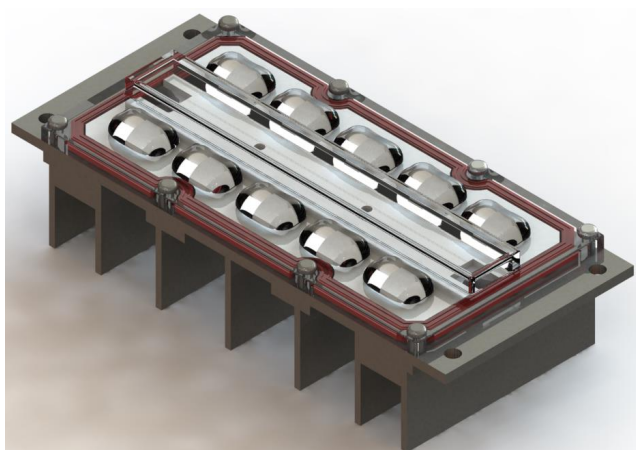
AMOSENSE CO., LTD.
 90,4 sandan 5-gil, Jiksan-eup, Seobuk-gu
 Cheonan-si, Chungcheongnam-do, Korea
 Tel: +82-41-590-5700
 www.amosense.co.kr



Спецификация

1. Размеры
2. Структура
3. Характеристики
4. Распределение света
5. Код спецификации
6. Упаковка

2. Kljndlmž

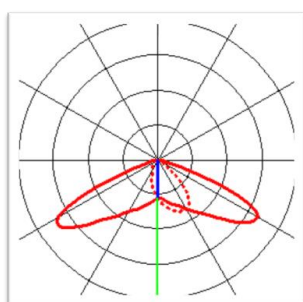


No.	Źb	FŹu
①		Stainless steel
②	Lens	Polycarbonate
③	LED	Ceramic
④	PCB	Aluminum
⑤	Thermal pad	Silicone
⑥	Gasket-wire	Silicone
⑦	Gasket-Lens	Silicone
⑧	Heatsink	Aluminum
⑨	Wire assembly	-

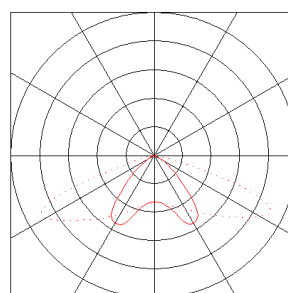
3. Characteristics

ITEM	Symbol	Min	Typ	Max	Unit	Remarks
Power Dissipation	Pd		25		W	
Input Voltage	IV	198	220	242	Vac	
Input Current	IF	-	115	-	mA	
Power Factor	P.F	0.95				
Luminous output	TLF		2800	-	lm	
Efficacy			120	-	lm/W	
Brightness Dimming		10		100	%	1 – 10V Dimming(option)
Color Temperature	CCT	2745	3028	3311	K	
		3745	4028	4311		
		4745	5028	5311		
		5310	5665	6020		
Color Rendering Index	CRI		80		-	
Protection	Surge immunity		1 kV			IEC/EN 61000-4-5(0.5kV spec)
	Immunity to electrical fast transient(Bursts)		2 kV			IEC/EN 61000-4-4(1kV spec)
Operating Temperature		-20	-	50	°C	
Storage Temperature		-30	-	80	°C	
Case Temperature	Tc	-	70	-		
Ingress Protection	-	IP 66			-	
Weight	-	300			g	

4. Light Distribution



Street Light



Tunnel Light

5. Specification code

5-1. Luminous Flux Table

Code	Min	Max
	Flux [lm] @ 220Vac	
A	1400	1600
B	1600	1800
C	1800	2000
D	2000	2400
E	2400	2700
F	2700	3000
G	3000	3100
H	3100	3400

5-2. Color Temperature Table

Code	Min	Max
	CCT [K] @ 220Vac	
A	2400	2700
B	2700	3200
C	3200	3700
D	3700	4260
E	4260	4745
F	4745	5310
G	5310	6020
H	6020	7000

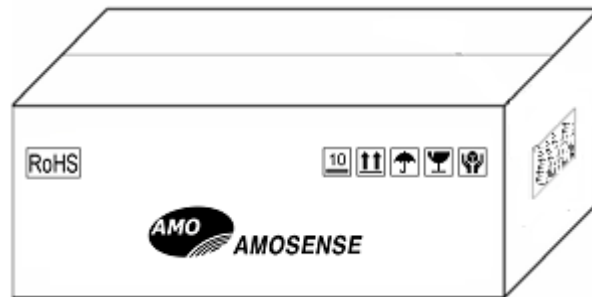
5-3. Color Rendering Index Table

Code	Min	Max
	CRI @ 220Vac	
A	-	40
B	40	60
C	60	70
D	70	80
J	80	90

6. Packing

Box

Size : 430(W)* 365(D)* 130(T) (mm), Q'ty : 20ea



Pallet

Size : 1290(W)* 730(D)* 1300(T) (mm), Box : 60ea (Q'ty : 1200ea)